

44th International Forestry Students' Symposium

Regional forests, global perspectives

August 7 – 23 2016



Imprint

Editor: Lisa Lehner

Head of Organizing Committee IFSS 2016

International Forestry Students' Association www.ifsa.net

E-Mail: ifss2016@gmail.com, lisa.lehner@boku.ac.at

Tel.: +43 680 3149743



Content & Layout: Lisa Lehner, Manuel Rakos, Magdalena Lackner,
Benjamin Stadler, Martina-Marianne Meyer

Print: This folder was printed with generous support of the Austrian Ministry of Agriculture,
Forestry, Environment and Water Management

Welcome to IFSS 2016!

Mountains, forests and water.

How does the typical Austrian landscape look like?

What are the differences between Austria and Germany?

Are there any?

If you are asking those questions, you are at the right place.

The International Forestry Students' Association (IFSA) gives you the unique opportunity to reflect on your education and to find out what you are looking for - in addition to your daily university routine. IFSA can be your driver and motivation, whether you are in the beginning of your studies or already graduated.

Our Organizing Committee has worked hard to realize the International Forestry Students' Symposium (IFSS) for the first time in Austria. Most of us have been working in IFSA for quite some time now. We want to give back what IFSA has given us over the years.

We want to share our beautiful landscapes, our traditional knowledge, our innovative technologies and our culture with you. Most importantly, we want to create space and possibilities to listen to each other and to exchange views. We come together at IFSS to reflect on our manifold understandings of forests and the different approaches of working in forestry. It is more important than ever to cultivate mutual understanding and to respect cultural differences.

Let's make this Symposium one to remember!

Enjoy IFSS2016!



Lisa Lehner

Head of Organizing Committee

44th International Forestry Students' Symposium 2016

International Forestry Students' Association

University of Natural Resources and Life Sciences, BOKU Vienna, Austria

Contact information

If you are lost or need assistance, please call the OC:

AUSTRIA

Lisa Lehner +43 680 314 9743

Benjamin Stadler +43 664 750 58438

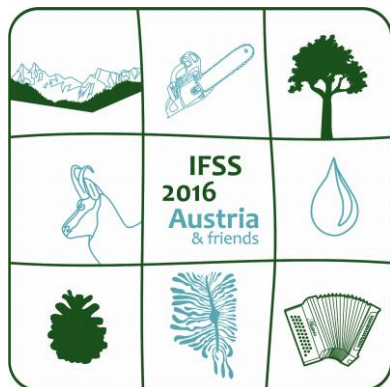
GERMANY

Melanie Schulte +49 151 235 23626

Eva von Schönebeck +49 176 804 4 7366

In case of a serious EMERGENCY call 112

(Euro emergency number)



Connect with us!

www.ifss2016.at

 **IFSS2016**

 **@IFSS2016**

Practical Information

1. Venue

The event will start at the dormitory of the University of Natural Resources and Life Sciences (BOKU dorm).

Address:

Registration and accommodation for the first four nights in Vienna:
BOKU Heim, Pötzleinsdorfer Straße 40, 1180 Wien
(nearest Tramway stop is “Wien Pötzleinsdorferstraße” (tram 41))

University of Natural Resources and Life Sciences (BOKU) where the opening ceremony will be held: Peter-Jordan-Strasse 82, 1190 Vienna
(nearest Bus stop is “Wien Dänenstraße”(bus 10A, 40A, 37A))

2. Logistics

Travel to/from Vienna

We are kindly asking our participants to make their own travel arrangements to/from Vienna. In case you travel by car we kindly ask you to plan your route on your own, e.g. via Google maps. Please note that we are going to leave Vienna after four days and it will not be possible to take the car with you for the rest of the event. You have to find a suitable parking lot in the city but be careful - almost all of Vienna is charged short-term parking zone.

If you travel by plane you will arrive at Vienna International Airport. From Vienna airport there are several options to proceed to the BOKU Heim (the University’s dormitory - our accommodation for the first four nights and the place of registration):

By ÖBB Train

The cheapest option to get to Vienna city is the ÖBB train service. The trains leave the Airport almost every 15 minutes and cost € 3,90 (one way). You can buy the ticket at a ticket office or terminal. The trip to “Wien Mitte - Landstraße” takes about 30 minutes. You can check the time table or directly book in advance via <http://www.oebb.at/en/>. Another option is the City Airport Train (CAT) which is faster but also more expensive.

By City Airport Train (CAT)

The CAT takes you every 30 minutes nonstop to the city centre (“Wien Mitte - Landstraße”) in just 16 minutes (one way € 12, return € 19). You can directly book in advance via <https://www.cityairporttrain.com/en/home> or buy the ticket from the ticket machine at the airport.

From Wien Mitte - Landstraße the easiest way to reach BOKU Heim is as follows:

Take the **green** metro U4 (direction Heiligenstadt) and exit Schotten**ring** (two stops)
Continue via **purple** metro U2 (direction Karlsplatz) and exit Schottent**or** (one stop)
Continue by Tramway 41 (direction Pötzleinsdorf) and exit Pötzleinsdorf (all together approx. 30-45 minutes)

From there it is a two minutes walk to the BOKU Heim (picture below).



Tickets for public transportation are available on terminals within the station (€ 2,20). These tickets can be used for any single trip within Vienna – you may change lines, but you may not interrupt your journey (and please don't forget to stamp them!). You can find more information on the public transport in Vienna below.

Please check for individual opening hours:

CAT 05:36 to 23:06 (daily)

Metro 05:00 to 24:00 (Mo – Fr); 24 hours (Sa + Su)

By Taxi

If you like it more comfortable you can take a Taxi. Arriving at the airport you will find an array of taxis at your disposal. You can hire them directly after check-out at the exit. Prices depend on the travel distance (start price: € 3,80 + ~ € 1,30/km), thus the transfer to BOKU may cost you around € 50,-. If you take one of the taxis from the bigger companies (e.g. ATS, Airport Driver) it is better to buy a voucher from their booth inside the arrival hall as you can get a better price than the metered fare and you can get a better idea of what it will cost.

Various companies offer pre-bookings (via telephone/e-mail or online) at fixed rates (~ € 33,- for one-way / cab -> i.e. you may fill the cab and share costs):

Company	Phone
ATS Airport Transfer Service	+43-1-7007-35905
Flughafentaxi ttc	+43-1-330-15-05
40100	+43-1-40100
Airport Driver	+43-1-22822

More information is available at:

<http://viennaairport.com/jart/prj3/va/main.jart?rel=en&content-id=1249344074251&reserve-mode=active>

Other Bus Lines

Several busses depart from the airport as well and connect Vienna Airport with the main Vienna transport hubs. Lines and timetables are available online.

3. Transportation in Vienna

Public Transport

Vienna is well covered with public means of transportation (i.e. metro, tram, bus). Several ticket options exist (e.g. 1, 2, 4 or 8 trip(s); 24, 48 and 72 hours – for the days in Vienna during IFSS you will not need a ticket!). You can purchase them in the ticket offices at various metro stations (Mo – Fr, 6:30 -18:30), online or at the terminals within the stations. For trams and busses you may buy them directly from the driver (but: the price is € 2,30). Depending on the ticket type, tickets must be stamped in the blue ticket stampers before boarding.

You will find them

- onboard of trams and busses
- at the barriers before entering the underground railway

Important notices about Wienerlinien:

- Please note that ticket controls are frequent and unpredictable. You should always have a ticket. In case you are caught without a ticket you are personally liable to pay a fine of € 103,-.



- You can use this [service site](http://www.wienerlinien.at/) (<http://www.wienerlinien.at/>) to plan public Transportation routes in Vienna. Don't try to use google maps for planning your trip by public transport as it does not give accurate information and will send you on overly complicated routes.
- [Timetables](#) are available online

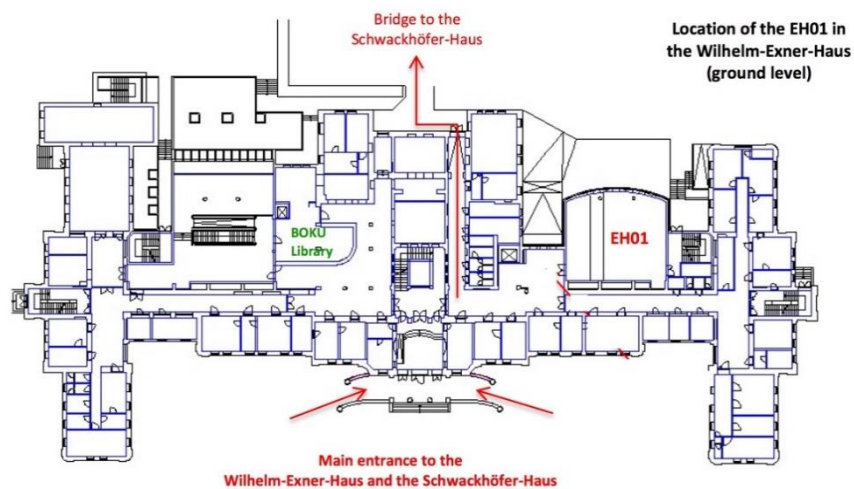
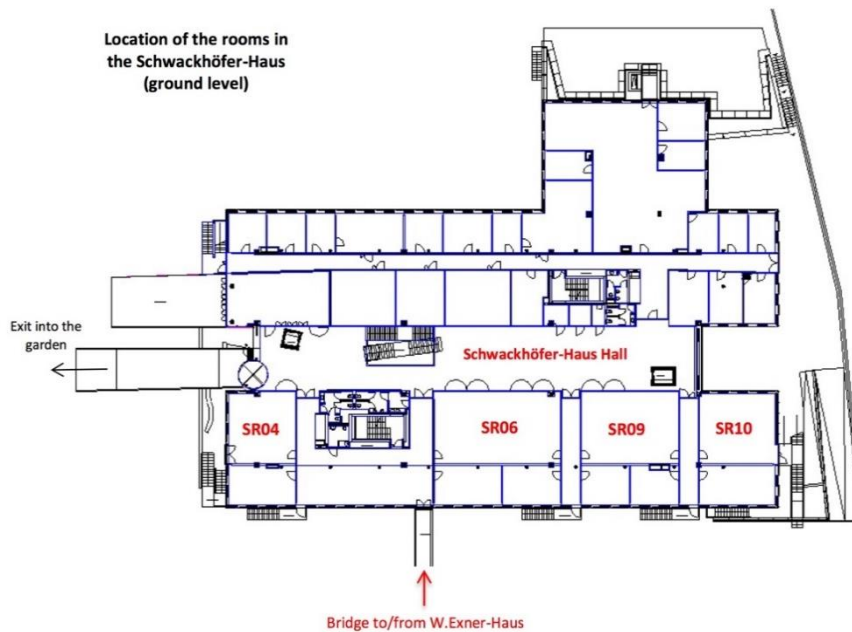
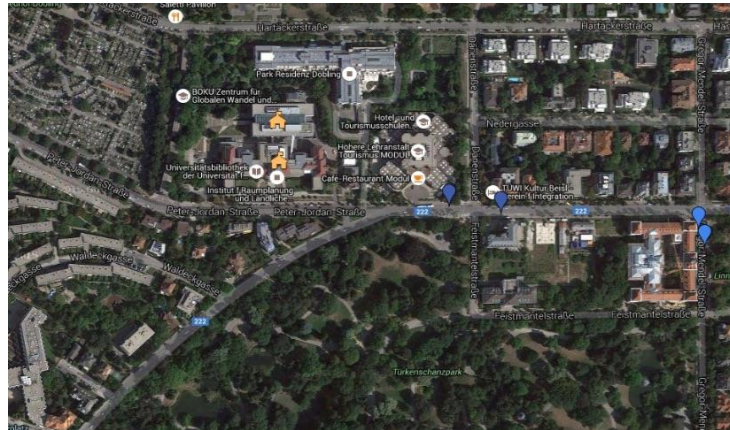
City Bike

You can also use bikes from the City Bike stations that are spread all over the city. It's a cheap and enjoyable way to get around the city. You can easily register with a credit card at the bike terminal or online. The registration fee is 1€. Take advantage of the free hour! The first hour of a ride is always free! And should you start another ride after more than a 15-minute break, you can take advantage of another "free hour". But please check out in advance if there is a bike station at your final destination where you can return your bike. For more detailed information please check out: <https://www.citybikewien.at/en/>

5. Location of the rooms at BOKU (Wilhelm-Exner-Haus and Schwackhöfer Haus)

We are going to be at the University the first two days. Here is an overview on the University grounds. We are going to be in the yellow flagged buildings.

Both buildings are connected through a “bridge” and entered at the same entrance at P.-Jordan-Strasse.



IFSS 2016 Route

This is the route of IFSS 2016 which will lead you through Austria and Bavaria/Germany within 16 days.



FACTS

- 2155 km of travelling
- 725 days for preparation of IFSS
- 120 participants from
- 33 different countries
- 32 sponsors, supporters and partners
- 31 helping hands in the Organizing Committee
- 25 excursion points
- 16 days of travelling
- 7 provincial states of Austria
- 6 different accommodations
- 2 countries: Austria and Germany
- 1 provincial state of Germany

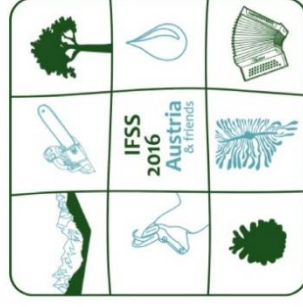


Head of the day: These are the people responsible for leading the group on this day (see at the top of the day's description). You can contact them if you have any questions about the program, accommodation etc.

Schedule International Forestry Students' Symposium 2016

	Sunday 7.8.	Monday 8.8.	Tuesday 9.8.	Wednesday 10.8.	Thursday 11.8.	Friday 12.8.	Saturday 13.8.	Sunday 14.8.	Monday 15.8.
morning	Arrival in AUSTRIA	Opening ceremony at the University of Natural Resources and Life Sciences (BOKU)	2nd plenary session at BOKU	Austrian Research Centre for Forests: Workshops on forest inventory, entomology, soil sciences & genetics	Workshops on forest engineering, silviculture and forest management planning at BOKU's experimental forest	Mayr-Melnhof enterprise: Forest engineering and cable yarding	Austrian Federal Forests: excursions on fishery, calamities and mountain forestry	3rd plenary session at Agricultural High School, Raumberg-Gumpenstein	Hallstatt salt mine
afternoon	Registration at BOKU dorm (12pm-6pm)	1st plenary session & IFSA statute changes workshop	Austrian Federal Forests headquarters and excursion on management of deciduous forests	Schönbrunn castle & gardens	International Evening	Forest nursery Lieco	National Park Gesäuse and Styrian Provincial Forests: excursions on forest conversion, visitor guidance and game management		Egger particle board manufacturing
evening	Welcome dinner at traditional wine tavern (Heuriger)	Networking night & poster presentations at BOKU		Special IFSS tram ride through the city center					
accommodation	BOKU dorm, Vienna	BOKU dorm, Vienna	BOKU dorm, Vienna	BOKU dorm, Vienna	Dorm, Forestry High School, Bruck/Mur	Dorm, Raumberg-Gumpenstein	Dorm, Raumberg-Gumpenstein	Dorm, Raumberg-Gumpenstein	Dorm, Agricultural School, Imst

	Tuesday 16.8.	Wednesday 17.8.	Thursday 18.8.	Friday 19.8.	Saturday 20.8.	Sunday 21.8.	Monday 22.8.	Tuesday 23.8.
morning	Provincial Forests Tirol: excursions on fire management, recreation and water protection forests of Innsbruck	4th plenary session at Binder Feuerwerk	Mountain torrent and avalanche control, Höfen	Bavaria State Forest Enterprise: excursions on close to nature climate change	TU Munich, School of Forest Science and Resource Management & Bavarian State Institute of Forestry	5th plenary session & IUFRO workshop at Agricultural School Schlierbach	Lenzing viscose manufacturing & paper museum Laakirchen	Farewell at BOKU dorm
afternoon		Panel discussion with the Austrian Minister of Agriculture, Forestry, Environment and Water Management	GERMANY: Walk around Schleißheim Palace	Visit of the Weitenburg Abbey or boat tour on the Danube river	AUSTRIA: ANRICA workshop "Almtal: Rural wealth from Forests" & Husqvarna demonstration at lake Almsee	Recreational daytrip to National Park Kalkalpen with raft cruise	Free time at Castle Aggstein	
evening		Tour through Binder saw mill and pellet production	Free time Munich				Panel discussion and farewell celebration at Castle Aggstein	
accommodation	Dorm, Agricultural School, Imst	Dorm, Agricultural School, Imst	Gym, Oberschleißheim	Gym, Oberschleißheim	Dorm, Agricultural School, Schlierbach	Dorm, Agricultural School, Schlierbach	BOKU dorm, Vienna	



DAY 0 Sunday, August 7th 2016

HEAD OF THE DAY: Benjamin and Patrik

- 12.00 – 18.00** Arrival and registration at BOKU dorm
- Our OC will welcome you at BOKU dorm with a nice welcome package and additional information about Vienna.
- 18.00-19.00** **Welcome of the participants** at BOKU dorm
- 19.00-19.30** Walk to traditional wine tavern
- 19.30-22.00** Dinner at the wine tavern Heuriger Pötzleinsdorf
- Traditional wine taverns are an Austrian speciality, serving homemade wine and foods. We want to share this special atmosphere and drink a glass with you at the Heuriger Restaurant Pötzleinsdorf.
- 22.00-23.00** Walk back to BOKU dorm



BOKU dormitory
Pötzleinsdorfer Straße 40
1180 Vienna

The wine tavern is very close to the dormitory.

WIFI will be available in the lobby, bring your cable to have internet access in your room.

DAY 1 **Monday, August 8th 2016**

HEAD OF THE DAY: Kathi and Lena

7.30	Wake up call
7.30-8.45	Breakfast
9.00	Walk to the University of Natural Resources and Life Sciences (BOKU)
10.00-11.15	Opening ceremony at BOKU (Schwackhöfer-Haus Hall) with Rector Martin Gerzabek (BOKU) Director General Gerhard Mannsberger (Ministry of Agriculture, Forestry, Environment and Water Management) President May Anne Then (IFSA) Executive Director Alexander Buck (IUFRO) Director Marc Palahi (EFI) IFSS Chair Lisa Lehner (IFSA)
11.15-11.30	Coffee break
11.30-12.15	Presentations by Herbert Weidinger Municipal Department No49 Forest office and urban agriculture, of the city of Vienna “Vienna woods and water supply” Prof. Karl Stampfer “Studying forestry at BOKU” Prof. Georg Gratzner “Mountain forestry at BOKU”
12.15-13.15	Lunch at Schwackhöfer-Haus Hall
13.15-15.00	1 st plenary Session at room EH01 (BOKU)
15.00-15.30	Coffee break at Schwackhöfer-Haus Hall
15.30-17.00	1 st plenary Session at room EH01 (BOKU)
17.00-18.30	IFSA statute changes workshop
19.00-22.00	IFSA networking night with poster presentations from participants (see page 30 f), information booths from our partners and sponsors, dinner buffet and drinks
22.00-23.00	Walk back to BOKU dorm



BOKU dormitory
Pötzleinsdorfer Straße 40
1180 Vienna

Business casual dress code. Prepare for a long day, we won't go back to the dorm until late at night. WIFI will be available at BOKU.

DAY 2 Tuesday, August 9th 2016

HEAD OF THE DAY: Alex and Dylan

7.00	Wake up call
7.15-7.45	Breakfast
8.00-9.00	Walk to BOKU
9.00-10.30	2nd plenary session at BOKU (room EH01)
10.30-11.00	Coffee break at Schwackhöfer-Haus Hall
11.00-13.00	2 nd plenary session (EH01)
13.00-14.00	Lunch at Schwackhöfer-Haus Hall
14.00	Travel to Austrian Federal Forests (ÖBf)
15.00-19.00	<p>Austrian Federal Forests (ÖBf) excursion</p> <p>The ÖBf is responsible for a tenth of Austria's natural landscape. It cares for, protects and manages the natural resources of the Republic of Austria – lakes, forest and mountains – based on the principle of sustainability.</p> <p>During our trip to the headquarters you will get a good overview on the company and during a field trip you will get an introduction into silviculture of deciduous forests in the range of the 2 million inhabitants' city Vienna.</p>
19.00-20.30	Dinner at Windischhütte, invitation by ÖBf
20.30-21.30	Travel to BOKU dorm



BOKU dormitory
Pötzleinsdorfer Straße 40
1180 Vienna

Bring your outdoor clothes (hiking boots!). Prepare for a long day, we won't go back to the dorm until late at night.
WIFI will be available at BOKU.

DAY 3 **Wednesday, August 10th 2016**

HEAD OF THE DAY: Manuel and Alice

7.00

Wake up call

7.15-7.45

Breakfast

8.00-9.00

Travel to the Austrian Research Centre for Forests (BFW)

9.00-13.00

Workshops at the Austrian Research Centre for Forests (BFW)
CHOOSE 2 out of 4 workshops and TELL US ON 9th!

W1: Sweet genes –Do we shape the gene pool of our forests?

Thomas Geburek, Department of Forest Genetics

Forest trees are genetically the most diverse organisms on our globe for good reasons. Three main evolutionary factors such as selection, gene flow and genetic drift will be briefly explained. Together with the students we will perform a small experiment how genetic drift affects the gene pool of forest trees. Then students will work in two groups (1) tropical and (2) temperate region, answering the question “How does forest management affect the genetic composition of forest tree populations?” The two groups will present their findings in 3 min. statements.

W2: Invasive forest pests: Pathways, risk and management

Gernot Hoch, Department of Forest Protection

Invasive pest insects and pathogens are an increasing threat to forest health worldwide. Global trade and mobility provide various opportunities for forest pests entering new territory. Introductions often remain undetected for a long time until severe damage occurs and eradication becomes very difficult or impossible. Negative impact on forest ecosystems and enormous economic costs are the consequences. Based on examples of recent pest introductions, such as Asian longhorned beetle, emerald ash borer, Chalara ash dieback, or the pine wilt disease, we will discuss possible pathways for introduction, risk of establishment of invasive pest species and potential damage, as well as management strategies for prevention, early detection and control.



W3: Soil related research and soil workshop

Ernst Leitgeb, Edwin Herzberger, Department of Forest Ecology and Soil

An overview about soil related scientific issues like soil carbon budgets, soils and drought stress of trees and forest soil monitoring is given. The importance of soils as a non-renewable resource is highlighted and options for a sustainable forest management (choice of tree species, timber harvest) are discussed. Field methods (soil sampling techniques, soil classification, measurement of soil hydrology parameter in the field etc.) are demonstrated.

W4: Methods of the Austrian National Forest Inventory

Ambros Berger, Alexandra Freudenschuß, Thomas Gschwantner, Department of Forest Inventory

The Austrian NFI employs several different methods and tools. Ground plot measurements are the indispensable basis for any NFI. We will present an example plot where people can also try out the instruments. In the remote sensing lab, the use of laser scanning and photogrammetry data, as well as stereoscopic imagery will be demonstrated. There will also be an introduction to the planning and the sampling theory behind the NFI.

- | | |
|--------------------|---|
| 13.00-14.30 | Lunch, sponsored by BFW |
| 14.30-15.00 | Walk to Gloriette |
| 15.00-17.00 | Free time at Schönbrunn palace gardens |
| 17.00 | Meeting point in front of the palace |
| 18.00-20.15 | Tram ride in a historic Viennese tram (tram stop Schloss Schönbrunn (Schlossallee) through the city center back to BOKU dorm |
| 20.15-21.30 | Dinner at BOKU dorm |



BOKU dormitory
Pötzleinsdorfer Straße 40
1180 Vienna

Dress casually. Prepare for a long day.
LAST DAY AT BOKU DORM! PACK YOUR BAGS!!

DAY 4 Thursday, August 11th 2016

HEAD OF THE DAY: Toni and Kathi

7.00	Wake up call
7.15-7.45	Breakfast and preparation for departure
8.00	Travel to BOKU experimental forest
10.00-12.30	<p>First round of workshops at BOKU experimental forest</p> <p>CHOOSE 2 out of 4 workshops and TELL US ON 10th!</p> <p>Institute of silviculture: Rapid Assessment of Ecosystem Services (Prof. Harald Vacik) In this workshop, participants will receive a short introduction to the assessment of ecosystem services and then work together in groups to assess the ability of forest stands to provide certain services (in the present state and in the future). The groups will then present and discuss their assessments and also consider multifunctionality and management implications. AND</p> <p>Natural disturbances: patterns and responses (Prof. Rupert Seidl) In this workshop we will discuss natural disturbance dynamics, and put the disturbance regimes of Central Europe in the context of forests around the globe. Furthermore, we'll discuss how natural disturbances can be addressed in ecosystem management. In small groups we will assess the resistance and resilience of different stands to disturbances, and discuss implications in the context of silvicultural decision making.</p> <p>Institute of Agricultural & Forestry Economics (Dr. Philipp Toscani): Forest management planning (FMP) defines the business strategies for long-term production planning and harvest scheduling at the level of the individual forest holding. Depending on the design of the inventory, FMP may comprise operational planning on stand level as well. The workshop introduces basic concepts & typical challenges of FMP in physical but also in monetary terms.</p> <p>Institute of Forest Engineering (Prof. Karl Stampfer): Current status and future challenges in Forest Road Network Development – We will look at the importance of roads as a key factor for sustainable forest management, success factors for quality high mountainous areas and environmental impacts of forest roads.</p>
12.30-13.30	Lunch, sponsored by BOKU
13.30-15.30	Second round of workshops
16.00	Travel to Forestry High school
18.00-19.30	Arrival at the accommodation & possibility to do grocery shopping
19.30-21.00	Traditional Austrian pig on a stick dinner grilled by Zopf family
21.00-24.00	INTERNATIONAL EVENING: Countries will display their specialties for 5min each. There will be no cooking possibility.

HLFS Forstwirtschaft Bruck
Dr.-Theodor-Körner-Straße 44
8600 Bruck an der Mur

Bring your outdoor clothes (hiking boots!). **ONLY ONE NIGHT AT THIS SCHOOL!**
WIFI will be available in the lobby.
(Name: wl, password: Willk0mmen)



DAY 5 Friday, August 12th 2016

HEAD OF THE DAY: Lisa and Patrik

- 7.30 Wake up call
7.30-8.15 Breakfast and preparation for departure
- 8.30 Travel to Mayr-Melnhof Forsttechnik
9.00-12.30 The focus of **Mayr-Melnhof-Forsttechnik** lies in the development of forestry machines (mainly cableyarding machines) for timber extraction in mountainous terrain. By using this machinery in the company's own operations it is continuously tested, adapted and optimised in a harsh working environment at an average terrain gradient of 63%. We are going to get a guided tour at Mayr-Melnhof Forsttechnik, with a field demonstration of cable yarding systems
- 12.30-13.30 Lunch, invitation by Mayr-Melnhof
- 13.30-16.00 Guided tour at Mayr-Melnhof Forsttechnik, with a field demonstration of cable yarding systems
- 16.00 Travel to Lieco forest nursery
17.00-18.30 Guided tour at **LIECO enterprise**. LIECO produces high-quality containerized forest seedlings with checked quality and guaranteed provenances by using polyethylene trays.
- 18.30 Dinner, invitation by Lieco
19.30-20.30 Travel to Agricultural high school dorm, Raumberg-Gumpenstein



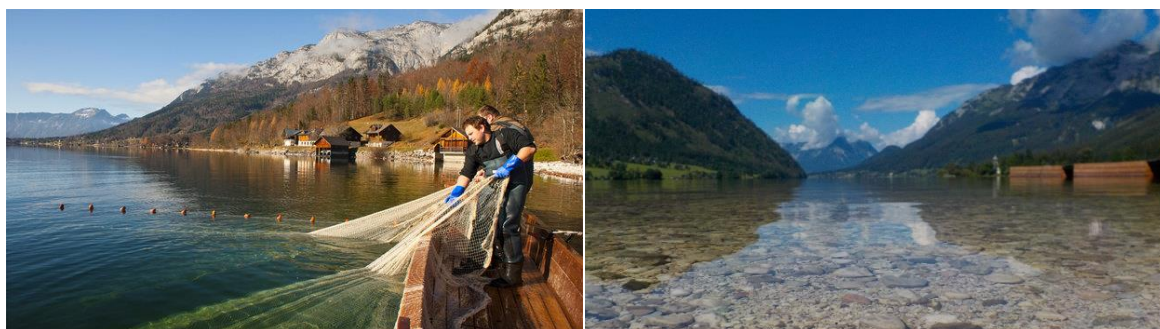
Lehr- & Forschungszentrum
Raumberg-Gumpenstein
Raumberg 38
8952 Irdning

Bring your outdoor clothes (hiking boots!).
WIFI will be available in the lobby.

DAY 6 **Saturday, August 13th 2016**

HEAD OF THE DAY: Manuel and Dylan

7.00	Wake up call
7.00-7.45	Breakfast
8.00-9.00	Travel to Austrian Federal Forests (ÖBf) , Grundlsee
9.00-9.30	Introduction to the regional forest management characteristics, like mountain forestry and fishery, of the ÖBf unit Inneres Salzkammergut
9.30-12.00	Two field trips: Calamities in mountain forestry AND fishery
12.00-14.00	Lunch and IFSA workshop “regions” at lake Grundlsee
14.00-16.30	2 nd round of field trips The region of Salzkammergut is known for its high number of lakes with extraordinary water quality. The ÖBf own most of the lakes, situated in the Salzkammergut and are commercially fishing them. They also own a fish farm, which we are going to visit.
16.30-17.30	IFSA workshop “finances”
17.30-21.00	Dinner and free time (swimming) at lake Grundlsee
21.00-22.00	Travel to Raumberg-Gumpenstein



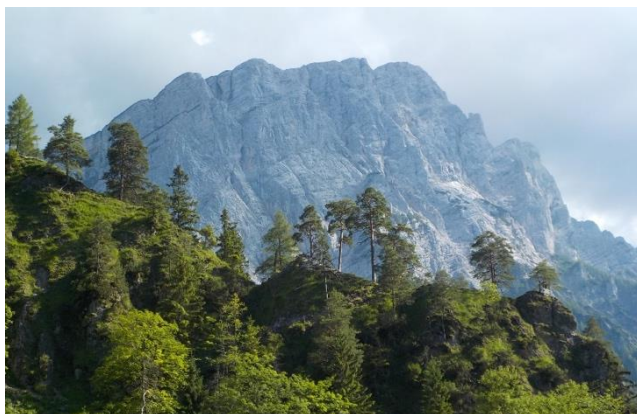
Lehr- &
Forschungszentrum
Raumberg-Gumpenstein
Raumberg 38
8952 Irdning

Bring your outdoor
clothes (hiking boots!)
and swimwear.
WIFI will be available in
the lobby.

DAY 7 Sunday, August 14th 2016

HEAD OF THE DAY: Lena and Patrik

7.30	Wake up call
7.30-8.15	Breakfast
8.30-12.30	3rd plenary session
12.30-13.00	Presentation on “Stakeholder involvement and conflict solving” by Wilhelm Graiss, teacher at Agricultural School Raumberg-Gumpenstein
13.00-14.00	Lunch
14.00-15.00	Travel to National Park Gesäuse : Water, forests and rocks! Precipitous limestone peaks, green forests and mountain pastures and the turbulent, foaming river rapids which give this high Alpine region its name await you in the Gesäuse National Park. For centuries the Gesäuse has been famous for its breathtakingly beautiful, inaccessible scenery.
15.00-18.30	Excursion National Park Gesäuse and Styrian Provincial Forests Three important topics will be covered during our excursion: visitor management, forest conversion (regenerating secondary forest) and game management.
19.00-20.00	Dinner, invitation by Styrian Provincial Forests
20.00-21.00	Travel to Raumberg-Gumpenstein



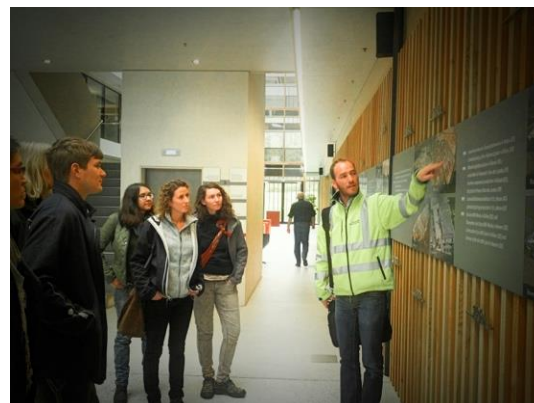
Lehr- & Forschungszentrum
Raumberg-Gumpenstein
Raumberg 38
8952 Irdning

Bring your outdoor clothes.
WIFI will be available in the lobby.

DAY 8 **Monday, August 15th 2016**

HEAD OF THE DAY: Manuel and Kathi

- 6.30** Wake up call
- 6.30-7.15** Breakfast and preparation for departure
- 7.30-9.00** Travel to **Hallstatt salt mine**
- 9.00-13.00** Guided tour through the unique underground salt mine “Salzwelten” in Hallstatt, where people have been digging for the white gold for more than 3 000 years. Going down a miners’ slide you will be led to a subterranean salt lake. A return to daylight is optional...
- 13.00-15.30** Travel to Egger St. Johann in Tyrol
Lunch on the bus
IFSA workshop “commissions” during the bus ride
- 15.30-18.00** Guided tour at **Egger particle board manufacturing**
The EGGER Group with its head office in St. Johann in Tyrol is one of the leading international wood-based material manufacturers. Founded in 1961, the family-based company now has 17 European production plants with approx. 7,400 employees worldwide. Global customers include those in the furniture industry, wood distribution, building markets and the DIY business.
- 18.00-19.00** Dinner, invitation by Egger
- 19.00-21.30** Travel to Agricultural school dorm Imst



Agricultural school LLA Imst
Meraner Straße 6
6460 Imst

Bring warm clothes and closed shoes
(it’s cold in the salt mine).

DAY 9 Tuesday, August 16th 2016

HEAD OF THE DAY: Alex and Dylan

7.00	Wake up call
7.00-7.45	Breakfast
8.00-9.30	Travel to Absam/Innsbruck
9.30-17.30	<p>Tyrolean Forestry Board</p> <p>You have to choose one of the two guided field trips</p> <p>Excursion 1: A major forest fire on the Absamer Vorberg in Tyrol (triggered by a discarded cigarette) burned down 120 ha of forests and destroyed their protection structures. This unfavourable catastrophe offers the opportunity to study natural processes related to forest fires and the reforestation of a freshly burned area. (Only for participants with good physical condition and appropriate equipment for hiking in steep terrain!)</p> <p>Exkursion 2: Bergwelt Tirol – multifunctional forests: tourism and water supply. The first part of the excursion will show with some practical examples how tourists and locals alike, who seek to spend their leisure time outside, are guided in an environmental friendly way.</p> <p>The second part of the excursion contains the unique possibility to visit the water supply storages of the city Innsbruck.</p>
17.30-18.30	Lunch during the hikes, sponsored by Tyrolean Forestry Board
18.30-21.30	<p>Travel to Imst</p> <p>Dinner at Hotel Hirschen, Imst, invitation by the Tyrolean Provincial State Governor Günther Platter</p>



Agricultural school LLA Imst
Meraner Straße 6
6460 Imst

Bring your outdoor clothes and
hiking boots.

DAY 10 Wednesday, August 17th 2016

HEAD OF THE DAY: Lena and Toni

6.00	Wake up call
6.00-6.45	Breakfast
7.00-8.30	Travel to Binderholz GmbH
8.30-10.45	4th plenary session
11.00-12.30	<p>Panel discussion with Minister Andrä Rupprechter (Ministry of Agriculture, Forestry, Environment and Water Management) CEO Reinhard Binder (Binderholz GmbH) CEO Herbert Jöbstl (Stora Enso Wood Products Central Europe) Prof. Michael Flach (University of Innsbruck)</p> <ul style="list-style-type: none"> • What are possible opportunities and limits of timber construction? • How can Austria's timber industry contribute to climate/energy challenges?
13.00-14.00	Lunch, sponsored by Binderholz
14.00-17.30	<p>Movie about Binder and guided tour through the saw mill and the FeuerWerk (pellet production). Binderholz today presents itself as a leading European company, employing about 1200 people. The range of products produced in AT and DL includes dimension lumber, surfaced lumber, solid wood panels edge glued and 3-ply, glulam beams, binderholz CLT BBS and pellet and briquettes as well as green electricity.</p>
18.00-19.30	Travel to Imst and possibility to do grocery shopping
20.00-21.30	<p>Silent Auction Items brought by the delegates will be auctioned! All money collected goes to the IFSA Development Fund. Dinner is served during the auction. Free drinks are sponsored by Egger.</p>



Agricultural school LLA Imst
Meraner Straße 6
6460 Imst

Dress casually and prepare for a long day.

DAY 11 Thursday, August 18th 2016

HEAD OF THE DAY: AT-Alex and Patrik, GER-Eva and Melanie

- 7.30** Wake up call
- 7.30-8.15** Breakfast and preparation for departure
- 8.30-10.00** Travel to mountain torrent in Höfen
- 10.00-13.00** Excursion and guided tour with the **Austrian mountain torrent and avalanche control** service. We will learn about the preventive protection measures in the torrents of Höfener Wildbäche and about the possibilities of technical means to adequately minimize risk and danger to human settlements.
- 13.00-16.00** Travel to accommodation: gym Oberschleißheim (Germany),
Lunch in the bus
- 16.00-16.30** Setting up sleeping places in the gym
- 16.30-16.45** Travel to **Schleißheim palace**. The Schleißheim Palace was built in the 17th and 18th century and counts as one of the most prominent baroque palace complexes in Germany. The palaces were used as summer residences for the German electors. Today they contain great parts of the Bavarian State Picture Collections.
- 16.45-18.00** Free time at Schleißheim palace
- 18.00-20.00** Dinner at Restaurant Schleißheim
- 20.00** Optional: Return to gym or **free time in Munich** (travel to city centre and return to accommodation has to be organized by participants themselves)



Tennispark Oberschleißheim
Dachauer Straße 35A
85764 Oberschleißheim

Bring your outdoor clothes and don't forget your passport, we will cross the border! Keep your sleeping bag and mattress ready!



DAY 12 Friday, August 19th 2016

HEAD OF THE DAY: Simon and Vinzenz

- 6.30** Wake up call
- 7.15-9.00** Travel to Kelheim (Breakfast on the bus)
- 9.00-12.00** Excursion with the **Bavarian State Forest Enterprise (BaySF)**
BaySF is the largest forest enterprise in Germany, managing over 800 000 ha. While hiking through the forests of the district office of Kelheim we get a general introduction to forestry in Bavaria and get to know the organisation of the Bavarian State Forest Enterprise. Visiting several stands we will discuss BaySF's close-to nature silviculture in times of climate change and strategies how to cope with bark infestations and see a harvesting operation in action.
- 12.00-13.00** Lunch in the forest
- 13.00-15.00** Excursion: Beech forest management
- 15.00-16.30** **Visit Abbey Weltenburg and boat trip on Danube river**
The Weltenburg Abbey was built as a Benedictine Monastery in the 7th century. It is situated on a peninsula in the middle of the Danube river.
- 16.30-18.30** Travel to Freising
- 18.30-20.30** Dinner at **Weihenstephaner Bräustüberl**
The "Bräustüberl" is a traditional Bavarian restaurant belonging to the oldest brewery in the world (Weihenstephan), which is part of the Technical University Munich. Even one of the lecture halls is located in Bräustüberl, so you can officially have lectures in there!
- 20.30-21.15** Travel to gym, Oberschleißheim



Tennispark Oberschleißheim
Dachauer Straße 35A
85764 Oberschleißheim

Bring your outdoor clothes!



DAY 13 Saturday, August 20th 2016

HEAD OF THE DAY: GER-Ludwig and Isabel, AT-Dylan and Manuel

- 7.30** Wake up call
- 7.30-8.30** Breakfast and preparation for departure
- 8.45-9.30** Travel to Freising
- 9.30-11.30** Presentations by **Technical University Munich** on study programmes and forestry research in Germany
- 11.45-15.45** Travel to Almsee (Austria), Lunch in the bus
- 16.00-18.00** **Workshops at Almsee**
Workshop nr 1 is provided by the **Husqvarna Group**. This is a world-leading producer of outdoor power products including chainsaws, trimmers, robotic lawn mowers and garden tractors. At their station you can test all kinds of Husqvarna products, like chainsaws and trimmers.
Workshop nr 2 is a guided tour on the ecology of the region
- 18.00-19.00** **Presentation ANRICA** (Austrian Natural Resources Management and International Cooperation Agency)
 ANRICA was founded in 2009 and is actively engaging in the field of international cooperation on climate change and rural development ever since. The managing director Markus Sommerauer will hold a presentation on the topic: How does semi-natural forest management influence the development of the rural area of the Almtal
- 19.00-20.30** Dinner, sponsored by ANRICA
- 20.30-21.30** Travel to Agricultural college dorm, Schlierbach



Agricultural College Schlierbach
Klosterstraße 11
4553 Schlierbach

Bring your outdoor clothes.
WIFI will be available. Password:
Zipfer1885

DAY 14 Sunday, August 21st 2016

HEAD OF THE DAY: Lisa and Kathi

7.30	Wake up call
7.30-8.15	Breakfast
8.30-10.00	5th plenary session
10.00-10.30	Coffee break
10.30-12.30	IUFRO Workshop: Future forests Mike Wingfield, president of IUFRO, will host a discussion on the future of forestry. In the course of this discussion we will explore what forestry will look like in the future, and how forestry education can best prepare students for the challenges ahead.
13.00-14.00	Lunch
14.00-15.30	Travel to Großraming
15.30-18.00	Raft trip on river Enns close to National Park Kalkalpen. Accompanied by a musician and while enjoying traditional Austrian snacks, we will explore one of the longest intact stream systems of the Eastern Alps, floating on a large-sized wooden raft.
18.30-20.00	Travel to dorm, Schlierbach
20.00-21.00	Dinner at dorm
21.00	IFSA Officials changeover and training



Agricultural College Schlierbach
Klosterstraße 11
4553 Schlierbach

Bring your outdoor clothes and clothes that dry easily (boat tour).
WIFI will be available. Password:
Zipfer1885

DAY 15 **Monday, August 22nd 2016**

HEAD OF THE DAY: Toni and Manuel

7.00	Wake up call
7.00-7.45	Breakfast and preparation for departure
	TOUR 1 (max 55 people)
8.00-9.00	Travel to Lenzing Group The core competence of the Lenzing Group is producing botanic fibers for the textile and hygiene industries from the renewable raw material wood.
9.00-11.30	Guided tour through Lenzing viscose manufacturing
11.30-12.30	Travel to Laakirchen TOUR 2
8.15-9.00	Travel to Laakirchen paper museum In the unique location of the former paper mill topics on paper production are presented. You can learn about the process of making paper and produce your own piece of paper! Guided tour through paper museum
9.00-12.00	
12.00-14.00	Lunch at paper museum Laakirchen (Tour1 & Tour2)
14.00-16.00	Travel to Castle Aggstein
16.00-17.00	Free time (Aggstein)
17.00-18.30	Panel discussion: Regional forests, global perspectives: addressing the future of the forest based sector Gerhard Mannsberger (Director General, Ministry of Agriculture, Forestry, Environment and Water Management) Newly elected IFSA President Mike Wingfield (IUFRO President) Thomas Schenker Forstverwaltung Mariensee (Forest owner) Gerald Steindlegger (ISS Integrated Sustainability Solutions) Moderator: Peter Mayer (Director of BFW, Austrian Research Centre for Forests)
19.00-20.30	Dinner, sponsored by the Ministry of Agriculture, Forestry, Environment and Water Management
21.00-0.00	Farewell party with the band BradIn&Bier, DJs Jens and Max
0.00-1.00	Travel back to BOKU dorm (Vienna)



BOKU dormitory
Pötzeinsdorfer Straße 40
1180 Vienna

Bring comfortable clothes and prepare for farewell dinner!
WIFI will be available in the lobby, bring your cable to have internet access in your room.

DAY 16 Tuesday, August 23rd 2016

HEAD OF THE DAY: Lena and Mara

- 7.15-8.00 Breakfast and preparation for departure
- 8.00-11.00 Goodbye at BOKU dorm



Have a safe journey home!

Poster presentations by IFSA students

on 8th of August 2016 at the University of Natural Resources and Life Sciences, BOKU

Evaluating the Effects of Grassland Set-Asides on Soil Nutrient Availability in Delta, BC, Canada

Khalil Walji, Sean M. Smukler, Maja Krzic and Christine Terpsma
University of British Columbia, Canada

Paving the Way for the Bioeconomy? British Columbia's Wood First Initiative

Meike Siegner
University of British Columbia, Canada

Dasometric characterization and condition of urban trees in the municipality of Linares, Nuevo Leon, Mexico.

Alexandra A. Rivera R., Eduardo Alanís Rodríguez and Jaime Polanía
Universidad Nacional de Colombia Sede Medellín, Colombia

Adoption of Close-to-Nature Forestry in Denmark

Poster based on work by J. Bo Larsen and Palle Madsen
Presenter: Joost de Koning
University of Copenhagen, Denmark

The Contribution of Palm Sugar Enterprises: UD. Sumber Rejeki to People's Income in Hargorejo Village, Kulon Progo Regency, Yogyakarta, Indonesia
and

Conservation Strategy of Natural Forest in Indonesia
Sigit Bagus Darmawan and Athiyah Faadhilah Marmansyah
Universitas Gadjah Mada, Indonesia

The importance of water conservation: Superiority of *Dendrocalamus asper* in regulating water and soil erosion

Meilani Karina Susilo and Dwi Graha Pangestu
Bogor Agricultural University, Indonesia

Phytoremediation potential for Cd and Pb in two species in semiarid region

Fereshteh Kordrostami
University of Tehran, Iran

Forest art and well-being in Korea

Jin Soo Shin and Youngtak Ko
Chungnam National University, Korea

Environmental services in Coronango municipality of Puebla State in Mexico

Hernández-Tecol Lilia, Corlay-Chee L., Monterroso-Rivas A.I., Robledo-Santoyo E., Robledo-Santoyo E., Buendía-Espinoza J.C., Vázquez-Alarcón A. and Prado-Hernández J.V.
Universidad Autónoma Chapingo, Mexico

Recovery of the mexican Wolf (*Canis lupus baileyi*) and its reintroduction into the north of Mexico

Itzhak E. López González

Universidad Autónoma Chapingo, Mexico

Delineation and Analysis of Dominant Trees using Unmanned Aerial Vehicle (UAV) Imagery and Object-based Image Classification in Mount Makiling Forest Reserve

Jan Joseph V. Dida, Cristino L. Tiburan Jr. and Nathaniel C. Bantayan

University of the Philippines Los Baños, Philippines

The influence of Forestry Therapy in human body: practices in Taiwan

Szu-Han Wang

National Taiwan University, Taiwan

Plants Used by Taiwan Aborigines (Tsou for example)

Chia Min Liu and Jia Yi Chew

National Chiayi University, Taiwan

Latent preferences of residents regarding the Calligraphy Greenway recreation setting in Taichung, Taiwan

Ching Chuang and Wan-Yu Liu

National Chung Hsing University, Taiwan

Forestry and agroforestry in Ukraine

and promotion of

NERM 2017 in Ukraine

Ganna Lobchenko

National University of Life and Environmental Sciences of Ukraine, Ukraine

IFSS sponsors

We are very thankful to our generous sponsors!

Diamond sponsor



**MINISTERIUM
FÜR EIN
LEBENSWERTES
ÖSTERREICH**

bmlfuw.gv.at

BEST OF AUSTRIA: SUSTAINABLE FOREST MANAGEMENT

Almost 50 percent of our national territory is covered by forests. They are managed by about 145,000 forest owners whose overall concept - sustainable forest management - is exemplary and extraordinarily successful. Forests provide the valuable raw material of wood and protect humans and infrastructures against natural hazards. They provide for clean air and clean water while at the same time capturing carbon and thus a major portion of our CO₂ emissions. Moreover, forests are among the most important areas of recreation. Together with the downstream sectors, Austria's forests offer secure jobs to over 300,000 people and generate a trade surplus of 3.5 billion euros.

The Austrian Ministry of Agriculture, Forestry, Environment and Water Management wishes all participants fruitful discussions at IFSS 2016!

Gold sponsors



The **Austrian Research Centre for Forests (BFW)** is the federal, multidisciplinary research and training centre which holds the legal status of an institution under public law. Six specialist departments focus on research in forest monitoring, provenance and seed research, forest protection issues, natural hazards and many more. This research is closely linked to training in two of their Training Centres. BFW is also the first contact for politics, administration and praxis for forest-related questions and provides forest-information as a competent contact point for public. Founded in 1874, with 275 employees nowadays, it is also responsible for the implementation of the Plant Protection Act 2011, the Act of Forest Reproductive Material 2003 and the EU Timber Regulation 2010 and more. Thanks to the support of BFW, three interns work at the department of public relations and knowledge transfer in August 2016 to support IFSS.



ANRICA (Austrian Natural Resources Management and International Cooperation Agency) was founded in 2009 and is actively engaging in the field of international cooperation on climate change and rural development ever since. ANRICA offers a novel approach for cost-effective forest resources assessments in the tropics to generate high quality data for effective monitoring, reporting and verification of climate change mitigation and adaptation, and sustainable forest management. Moreover, ANRICA supports the global drive for climate resilience by combining geological surveys and rapid large-scale landscape assessments with early warning systems by geo-monitoring, forest management, structural measures and land use planning by hazard risk mapping to manage natural disaster crises.



Universität für Bodenkultur Wien
University of Natural Resources
and Applied Life Sciences, Vienna

The **University of Natural Resources and Life Sciences** was founded in 1872 and has established itself as a teaching and research centre for renewable resources, which are necessary for human life. Forestry and

Wood Science, Water Management, Agriculture, Food Chemistry and Biotechnology, Natural Resources Management and Ecological Engineering, Landscape Design and Landscape Planning, Environment and Bio-Resources Management. The English study programs can be found on the webpage: <http://www.boku.ac.at/>



As Austria's nature enterprise Österreichische Bundesforste (ÖBf) maintains every tenth square metre of Austria's natural landscape. It cares for, protects and manages the natural resources of the Republic of Austria – lakes, forest and mountains – based on the principle of sustainability. Only as much is taken from the natural environment as can grow back again.

www.bundesforste.at



binderholz

tiptop timber

nature in architecture

IFSS
2016
Austria
& friends

binderholz woodcenter, Kösching | DE

binderholz products and construction solutions made of solid timber are as individual as your project.

Buildings of different use types and scales are built internationally by partner companies and customers, using our solid timber products and the supportive services by binderholz. We offer engineering construction solutions, CNC custom joinery, and technical consulting.

binderholz CLT BBS · glulam · solid wood panels · lumber · profiled timber · densified biofuels · green electricity

www.binderholz.com

Silver sponsors



**BAYERISCHE
STAATSFORSTEN**
Nachhaltig Wirtschaften.

The **Bavarian State Forest Enterprise** is the largest forest enterprise in Germany. With over 800.000 hectares they manage about 30 % of Bavaria's forest area – or roughly 11 % of its total land area. Together with their staff of 2.600 people the Bavarian State Forests take stewardship for the state owned forests in Bavaria and manage them according to the principle of sustainability in a close-to- nature manner.

E EGGER makes progress

The **EGGER Group** with its head office in St. Johann in Tyrol is one of the leading international wood-based materials manufacturers. Founded in 1961, the family-based company now has 17 European production plants with approx. 7,400 worldwide employees. Global customers include those in the furniture industry, wood distribution, building markets and the DIY business.



the future of
ecological
heating



The focus of '**Mayr-Melnhof-Forsttechnik**' lies in the development of forestry machines (mainly cableway machines) for timber extraction in mountainous terrain. By using this machinery in the company's own operations it is continuously tested, adapted and optimised in a harsh working environment at an average terrain gradient of 63%.

proPelletsAustria
www.propellets.at

pro»pellets
Austria



Abteilung 10 Land- und Forstwirtschaft
Landesforstdirektion

The **Styrian Forestry Board (Landesforstdirektion)** is responsible for the conservation of the functionality of the Styrian forests. In order to fulfil this multi-faceted responsibility, they require a staff of well-educated experts. The **Styrian Forestry Board (Landesforstdirektion)** supports the IFSS to improve the network of the forestry educational institutions.



The **Tyrolean Forestry Board (Landesforstdirektion Tirol)** is administrating the Western region of Tyrol with its 505.762 ha of forest area (40% of the total area of Tyrol). The areas are mostly situated in mountainous regions where the maintenance of the protective function of forests is essential which will be demonstrated during the IFSS excursion.



Sterf company is situated in Styria, Austria and was founded 2008. The wholesale company is specialized in trading with grain, oil seeds, and biomass.

The Sterf Team wishes the participants a great journey through Austria!

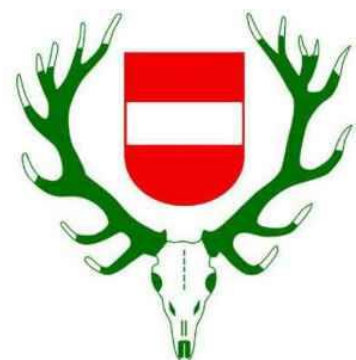
Bronze sponsors



claus rodenberg waldkontor gmbh

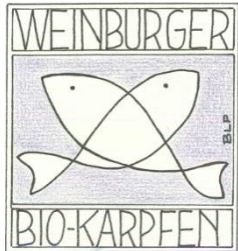


SWAROVSKI
OPTIK



Central Office of Austrian
Hunting Associations

Supporters



	RELASKOP-TECHNIK
	VERTRIEBSGES.M.B.H.
	Gaisbergstraße 11 a e-mail: A-5020 Salzburg/Austria relaskop@relaskop.at
	Telefon + Fax: homepage: 0043/ 662/ 82 53 16 www.relaskop.at

Contributing partners



The Organizing Committee



Lisa Lehner



Benjamin Stadler



Magdalena Lackner



Fabian Zopf



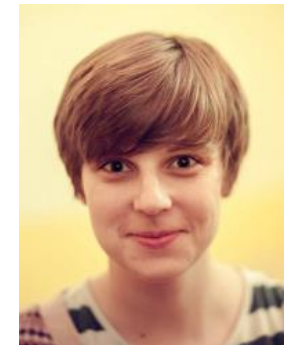
Katharina Albrich



Manuel Rakos



Antonia Lindau



Alice Cosatti



Jasmin Zisch



Alexander Vilsmeier



Martina Meyer



Christoph Moser



Dylan Goff



Lea Oberhofer



Eva von Schönebeck



Melanie Schulte

Martin Schlaffer, Erwin Moldaschl, Patrik Rosival, Daniel Morant, Hanna Krismer, Isabel Engel, Vinzenz Held, Alina Kasten, Ludwig Fichtner, Patricia Friedlmeier, Simon Abele, Simeon Max, Barbara Öllerer, Sven Freynschlag, Nina Bisko & many more...

Special thanks to

This Symposium would not have been possible without the very generous help of the manifold supporters and the enormous voluntary working force of dedicated IFSA students. We formed the OC in August 2014 and have been working hard since then to realize IFSS2016. Some of us had to delay their studies, some just worked double shifts and all of us grew together as a team. A big thank you to the OC who made all of this possible!

A special thanks goes out to Director General **Gerhard Mannsberger** and his team from the Austrian Ministry of Agriculture, Forestry, Environment and Water Management: with his support right at the beginning of this huge project we could actually dare to realize it.

We also want to mention two very important Austrian personalities who are essential for the development of Austrian IFSA activities: **Alexander Buck** (IUFRO) and **Peter Mayer** (BFW) have supported IFSA for many years now, they started doing so even before an LC in Austria was established. When we started LC BOKU in 2011 they were the first ones to acknowledge and support our work. Thank you!

The University of Natural Resources and Life Sciences (BOKU) is IFSA LC BOKU's homebase and gives IFSA space to exchange and organize meetings. The University has supported us from the start and we are very thankful for that.

